



JEEP CHEROKEE

MY17 BUYER'S GUIDE
JULY 2017



Jeep®

Jeep
**THERE
& BACK
GUARANTEE** ^

Jeep MY17 CHEROKEE

MODEL HIGHLIGHTS*

SPORT

Engine

2.4L Tigershark® Engine
130kW 229Nm

Transmission

9-Speed Automatic
Front Wheel Drive

Towing Capacity

Maximum Towing Capacity
(Braked Trailer) - 2,000kg

Fuel Consumption ⁽¹⁾

Combined Cycle (L/100km)
2.4L - 9.1

Features:

Wheels

- 17-Inch Alloy Wheels

Safety & Security

- 7 Airbags
- ParkView Reverse Parking Camera
- 5-Star ANCAP Rating ⁽⁴⁾
- LED Daytime Running Lights
- LED Tail Lamps
- Electric Park Brake
- Electric Power Steering

Audio & Connectivity

- 5.0-Inch Touchscreen
- Voice Command & Bluetooth®
- 3.5-Inch Instrument Cluster Display
- 6-Speaker Audio System

LONGITUDE

Engine

3.2L Pentastar® V6 Engine
200kW 315Nm

Transmission

9-Speed Automatic
All Wheel Drive

Towing Capacity

Maximum Towing Capacity
(Braked Trailer) - 2,200kg

Fuel Consumption ⁽¹⁾

Combined Cycle (L/100km)
3.2L - 9.7

Features:

Wheels

- 17-Inch Alloy Wheels

Safety & Security

- Rain Sensitive Windshield Wipers
- Automatic Headlamps
- Fog Lamps
- Automatic Dimming Internal Rear Vision Mirror
- ParkSense® Rear Parking Sensors

Off-Road Capability

- Jeep Active Drive I AWD System
- Jeep Selec-Terrain Traction Management System

Comfort & Convenience

- Dual Zone Climate Control
- Power Bootlid Release

Interior

- Leather Wrapped Steering Wheel
- 8-Way Power Front Seats
- 4-Way Power Lumbar Adjust
- Deep Tinted Privacy Glass
- Roof Rails

LIMITED

Engine

3.2L Pentastar® V6 Engine
200kW 315Nm

Transmission

9-Speed Automatic
All Wheel Drive

Towing Capacity

Maximum Towing Capacity
(Braked Trailer) - 2,200kg

Fuel Consumption ⁽¹⁾

Combined Cycle (L/100km)
3.2L - 9.7

Features:

Wheels

- 18-Inch Alloy Wheels

Safety & Security

- Bi-Xenon Headlamps
- ParkSense® Front & Rear Parking Sensors

Interior

- Leather Seats
- Heated Front Seats
- Vinyl Door Trim

Audio & Connectivity

- 8.4-Inch Touchscreen
- Satellite Navigation
- 7-Inch Full Colour Instrument Cluster Display
- 9-Speaker Alpine Sound System

Exterior

- Bright Chrome Exterior Elements

TRAILHAWK

Engine

3.2L Pentastar® V6 Engine
200kW 315Nm

Transmission

9-Speed Automatic
Four Wheel Drive

Towing Capacity

Maximum Towing Capacity
(Braked Trailer) - 2,200kg

Fuel Consumption ⁽¹⁾

Combined Cycle (L/100km)
3.2L - 10.1

Features:

Wheels

- 17-Inch Alloy Wheels

Off-Road Capability

- Trail Rated
- Jeep Active Drive Lock 4x4 System
- Jeep Selec-Terrain with Rock Mode
- Off-Road Suspension with Raised Ride Height
- Two Speed Power Transfer Unit
- Rear Locking Differential
- Red Recovery Hooks
- Hill Descent Control
- 4 Underbody Skid Plates

Exterior

- Unique Front & Rear Fascia
- Black Anti-Glare Hood Decal
- Trailhawk Leather Seats with Red Accent Stitch
- Trail Rated Badging
- Neutral Grey Exterior Accents



SPORT



LONGITUDE



LIMITED



TRAILHAWK

Jeep MY17 CHEROKEE

SPECIFICATIONS*

Comfort & Convenience	Code	Sport	Longitude	Limited	Trailhawk
Air Conditioning	HAC	●	-	-	-
Dual Zone Climate Control	HAF	-	●	●	●
Push Button Start	GX4	-	○	○	○
Keyless Entry	GXP	●	●	●	●
Keyless Entry - Remote Proximity	GXD	-	○	○	○
Remote Start	XBM	-	●	●	●
Heated Front Seats	JPM	-	-	●	●
Manual 6-Way Driver/Passenger Seats	JT6	●	-	-	-
Power 8-Way Driver/Passenger Seats	JPT	-	●	●	●
Power 4-Way Driver/Passenger Lumbar Adjust	JRN	-	●	●	●
Power Windows	JP3	●	●	●	●
Power Bootlid Release	JRC	-	●	●	●
Automatic Headlamps	LMG	-	●	●	●
Automatic High Beam Control	LMS	-	-	○	○
Automatic Dimming Internal Rear Vision Mirror	GN5	-	●	●	●
Rain Sensitive Windshield Wipers	JHC	-	●	●	●
Tilt & Telescopic Steering Column Adjust	SUD	●	●	●	●
Power Locking Fuel Filler Door	XJA	●	●	●	●
Power Folding Exterior Mirrors	LER	●	●	●	●
Side Exterior Mirrors with Defrost	NHJ	●	●	●	●
Rear Window Wiper	JHB	●	●	●	●
Rear Window Defroster	GFA	●	●	●	●
Performance & Capability	Code	Sport	Longitude	Limited	Trailhawk
Jeep Active Drive I AWD System	DK2	-	●	●	-
Jeep Active Drive Lock 4x4 System	XX9	-	-	-	●
Two Speed Power Transfer Unit	-	-	-	-	●
Jeep Selec-Terrain Traction Management System	XAB	-	●	●	●
Rear Locking Differential	DSH	-	-	-	●
Off-Road Suspension	SDJ	-	-	-	●
Heavy Duty Engine Cooling	NMC	-	●	●	●
Auxiliary Transmission Cooler	NHB	●	●	●	●
Disconnecting Rear Axle	-	-	●	●	●
Hill Hold Control	BNG	●	●	●	●
Hill Descent Control	BNH	-	●	●	●
Steel Spare Wheel	TBB	●	●	●	●
Black Anti-Glare Hood Decal	MYA	-	-	-	●
Red Recovery Hooks (2 x Front, 1 x Rear)	XEW	-	-	-	●
Performance (Continued)	Code	Sport	Longitude	Limited	Trailhawk
Skid Plate - Fuel Tank	XEE	-	-	-	●
Skid Plate - Front Suspension	XEU	-	-	-	●
Skid Plate - Transmission	XE9	-	-	-	●
Skid Plate - Underbody	XF3	-	-	-	●
Safety, Security & Driver Assistance	Code	Sport	Longitude	Limited	Trailhawk
Parkview™ Reverse Parking Camera	XAC	●	●	●	●
ParkSense® Rear Parking Sensors	XAA	○	●	-	-
ParkSense® Front & Rear Parking Sensors	XH4	-	-	●	●
7 Airbags (2 Front, 2 Side Curtain, 2 Side Seat, 1 Driver Knee)	-	●	●	●	●
Full Speed Forward Collision Warning Plus	LSU	-	-	○	○
Advanced Brake Assist	BGG	-	-	○	○
Lane Departure Warning Plus	LAS	-	-	○	○
Blind Spot Monitoring	XAN	-	-	○	○
Rear Cross Path Detection	-	-	-	○	○
Parallel & Perpendicular Park Assist with Stop	XH5	-	-	○	○
Cruise Control	NHM	●	●	●	●
Cruise Control - Adaptive with Stop & Go Function	NHZ	-	-	○	○
Tyre Pressure Monitoring	XGM	●	●	●	●
Electronic Stability Control	BNB	●	●	●	●
Electronic Roll Mitigation	BNS	●	●	●	●
Traction Control	BNP	●	●	●	●
Trailer Sway Control	BNT	●	●	●	●
Engine Immobiliser	GXW	●	●	●	●
Front Passenger Active Head Restraints	CDP	●	●	●	●
Passenger Seat Belt Alert - Front	LAX	●	●	●	●
Passenger Seat Belt Alert - Rear	LAU	●	●	●	-

Standard (●) Option (○) Not Offered (-)

Jeep MY17 CHEROKEE

SPECIFICATIONS*

Audio & Connectivity	Code	Sport	Longitude	Limited	Trailhawk	Exterior	Code	Sport	Longitude	Limited	Trailhawk
Uconnect® 5.0 with AM/FM Radio, Bluetooth® Phone/Audio 5.0-Inch Touchscreen Display	RJ2	●	●	-	-	Headlights - Halogen	LMC	●	●	-	-
	RFU					Headlights - Bi-Xenon	LMP	-	-	●	●
Uconnect® 8.4 with AM/FM/Digital Radio, Bluetooth® Phone/Audio Satellite Navigation 8.4-Inch Touchscreen Display Digital Radio (DAB+)	RJ4	-	○	●	●	LED Daytime Running Headlamps	LMZ	●	●	●	●
	JLN					LED Tail Lamps	LAY	●	●	●	●
	RFL					Fog Lamps	LNJ	-	-	-	●
	RS9					Fog & Cornering Lamps	LNP	-	●	●	-
6 Speaker Audio System	RCG	●	●	-	-	Headlamp Washer	JHS	-	-	●	●
9 Speaker Alpine® Audio System including Subwoofer & 506 Watt Amplifier	RC3	-	○	●	●	Dual-Pane Panoramic Sunroof	GWJ	-	-	○	○
	-					Alloy Wheels - 17-Inch	-	●	●	-	●
Integrated Voice Command with Bluetooth®	XRB	●	●	●	●	Alloy Wheels - 18-Inch	-	-	-	●	-
Steering Wheel Mounted Audio Controls	RDZ	-	●	●	●	Roof Rails - Bright	MW1	-	●	●	-
Media Hub (SD/USB/AUX)	CU7	●	●	●	●	Roof Rails - Neutral Grey	MW3	-	-	-	●
Remote USB Port - Centre Console	RSX	-	○	●	●	Glass - Solar Control	GAM	●	-	-	-
12V Power Outlet - Centre Console	JJJ	●	●	●	●	Glass - Tinted (#)	GEG	-	●	●	●
12V Power Outlet - Cargo Area	JJM	●	●	●	●	Grille - Bright Surround	MYV	●	●	●	
230V Power Outlet - Rear of Centre Console	JKZ	-	○	○	○	Grille - Neutral Grey	MF4	-	-	-	●
Interior	Code	Sport	Longitude	Limited	Trailhawk	Side Window Surrounds - Black	MMF	●	-	-	●
Seat Fabric - Cloth	-	●	●	-	-	Side Window Surrounds - Bright	MMP	-	●	●	-
Seat Fabric - Leather	-	-	-	●	●	Door Handles - Body Colour	MNK	●	●	●	●
Steering Wheel - Urethane	SCA	●	-	-	-	Exterior Mirrors - Supplemental Turn Signals	LEB	●	●	●	●
Steering Wheel - Leather Wrapped	SCC	-	●	●	●	Exterior Mirrors - Body Colour	LEP	●	●	●	-
Shift Knob - Urethane	CV1	●	-	-	-	Exterior Mirrors - Neutral Grey	LE6	-	-	-	●
Shift Knob - Leather Wrapped	CVB	-	●	●	●	Shark Fin Antenna - Body Colour	RHC	●	●	●	●
Door Trim - Vinyl	CBG	-	-	●	●	Trail Rated Badge	MT2	-	-	-	●
Instrument Cluster - 3.5-Inch Display	JAY	●	●	-	-	(#) Glass - Tinted applies to rear passenger and rear cargo windows only. Front passenger windows and windscreen are not tinted.					
Instrument Cluster - 7.0-Inch Display	JAJ	-	-	●	●						
Electric Park Brake	XC4	●	●	●	●	Standard (●) Option (○) Not Offered (-)					
Height Adjustable Front Seat Belts	CGD	●	●	●	●						
Rear Centre Armrest with Cupholder	CSN	●	●	●	●						
Rear Seat - 60/40 Split Folding	CAK	●	●	●	●						
Sliding Sun Visors with Illuminated Vanity Mirrors	GNC	●	●	●	●						
Floor Mats - Carpeted Front & Rear	CLE	●	●	●	-						
Floor Mats - All Weather Front & Rear	CLF	-	-	-	●						
Cargo Area Tonneau Cover	CSD	●	●	●	●						
Cargo Management System	CLJ	●	●	●	●						
Cargo Tie Down Loops - Boot	CKT	●	●	●	●						

Jeep MY17 CHEROKEE

GROUPS & OPTIONS*

	Code	Comments	Sport	Longitude	Limited	Trailhawk
Parksense Rear Park Assist System Air Conditioning	XAA HAA	-	O	S	S	S
Sound Tech Group Satellite Navigation 8.4-Inch Touchscreen Display Digital Radio (DAB+) 9 Speaker Alpine® Audio System including Subwoofer 506 Watt Amplifier Remote USB Port	AA2 JLN RFL RS9 RC3 - RSX	-	-	O	S	S
Electronics Convenience Group Keyless Entry - Remote Proximity Push Button Start 230V / 50Hz Auxiliary Power Outlet	AFC GXD GX4 JKZ	-	-	O	O	O
Technology Group Lane Departure Warning Plus Auto High Beam Headlamp Control Full Speed Forward Collision Warn Plus Adaptive Cruise Control with Stop & Go Function Blind Spot Monitoring & Rear Cross Path Detection Parallel & Perpendicular Park Assist with Stop Advanced Brake Assist	ADG LAS LMS LSU NHZ XAN XH5 BGG	-	-	-	O	O
Dual Pane Panoramic Sunroof	GWJ	-	-	-	O	O
17-Inch Black Alloy Wheels	WFK	-	-	-	-	O

Option (O) Standard (S) Not Available (-)

WHEELS*



WAC - 17-Inch Alloy Wheels
(Standard on Sport & Longitude)



WPW - 18-Inch Polished Alloy Wheels
(Standard on Limited up to 14-June 2017)



WPU - 18-Inch Painted Alloy Wheels
(Standard on Limited from 15-June 2017)



WAD - 17-Inch Alloy Wheels
(Standard on Trailhawk)



WFK - 17-Inch Black Alloy Wheels
(Option on Trailhawk)



MY17 CHEROKEE

EXTERIOR COLOUR GUIDE*



PW7 - Bright White
(Standard)



PAU - Granite Crystal
(Option)



PSC - Billet Silver
(Option)



PSQ - Rhino
(Option)



PRC - Firecracker Red
(Option)



PRP - Deep Cherry Red
(Option)



PBJ - Hydro Blue
(Option)



PPX - Patriot Blue
(Option - Limited Availability)



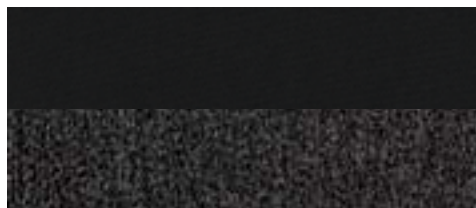
PT6 - Light Brownstone
(Option)



PXJ - Diamond Black
(Option)

Jeep MY17 CHEROKEE

INTERIOR TRIM GUIDE*



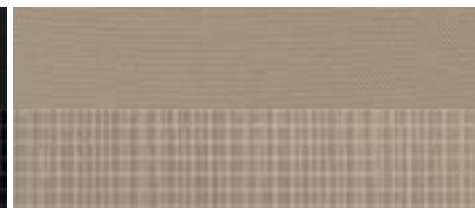
A7X9 - Black Cloth
(Standard on Sport)



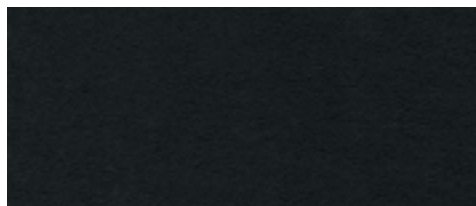
A7XL - Black & Light Frost Beige Cloth
(Option on Sport)



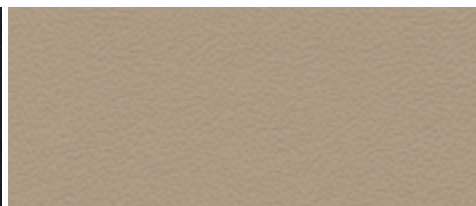
A5X9 - Black Cloth
(Standard on Longitude)



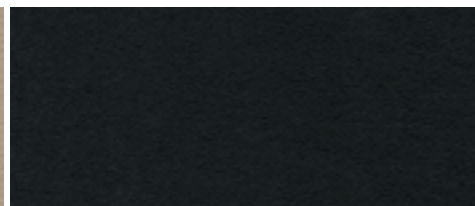
A5XL - Black & Light Frost Beige Cloth
(Option on Longitude)



ALX9 - Black Leather
(Standard on Limited)



ALXL - Black & Light Frost Beige Leather
(Option on Limited)



TLX9 - Black Leather with Red Accent Stitch
(Standard on Trailhawk)



TLU5 - Brown Leather with Red Accent Stitch
(Option on Trailhawk)

COLOUR & TRIM MATRIX*

	Sport		Longitude		Limited		Trailhawk	
Option Code	A7X9	A7XL	A5X9	A5XL	ALX9	ALXL	TLX9	TLU5
Seat Material	Cloth	Cloth	Cloth	Cloth	Leather	Leather	Leather	Leather
Seat Colour	Black	Beige	Black	Beige	Black	Beige	Black	Brown
Bezel Colour	Silver		Silver		Silver		Silver	
Steering Wheel	Urethane		Leather Wrapped		Leather Wrapped		Leather Wrapped	
Headliner	Light		Light		Light		Light	
Exterior Colour								
Bright White (PW7)	●	●	●	●	●	●	●	●
Granite Crystal (PAU)	-	-	●	●	●	●	●	●
Billet Silver (PSC)	●	●	●	●	●	●	●	●
Rhino (PSQ)	●	●	●	●	●	●	●	●
Freccracker Red (PRC)	-	-	-	-	-	-	●	-
Deep Cherry Red (PRP)	●	●	●	●	●	●	●	●
Hydro Blue (PBJ)	●	-	-	-	-	-	●	-
Patriot Blue (PPX)	●	●	●	●	●	●	●	-
Light Brownstone (PT6)	●	●	●	●	●	●	●	●
Diamond Black (PXJ)	●	●	●	●	●	●	●	●

Available (●) Not Offered (-)

Jeep MY17 CHEROKEE

MOPAR® GENUINE ACCESSORIES*



STORAGE LOCKER



COLLAPSIBLE CARGO TOTE



MOULDED CARGO MAT



HITCH-MOUNTED BIKE CARRIER



ROOF-MOUNTED BIKE CARRIER



TENT KIT

(**) Overseas models shown in imagery, used for visual guidance only. Some features displayed may not be available in Australia. Please consult your preferred Jeep Dealer for information on Accessories currently provided.

Jeep MY17 CHEROKEE

TECHNICAL INFORMATION*

	Sport 2.4L 9AT FWD	Longitude 3.2L 9AT AWD	Limited 3.2L 9AT AWD	Trailhawk 3.2L 9AT 4x4
Body & Chassis				
Layout	Front Engine, FWD	Front Engine, AWD		Front Engine, 4WD
Construction	Steel Unibody			
Assembly Plant	Toledo Assembly Complex, Toledo, Ohio, USA.			
Doors	5			
Seats	5			
Powertrain				
Description	2.4L Tigershark® Engine	3.2L Pentastar® V6 Engine with Stop/Start (ESS)		
Capacity	2,360	3,239		
Cylinders	4	6		
Configuration	Inline	V		
Aspiration (Natural / Forced)	Natural			
Max. Power (kW @ rpm)	130 @ 6400	200 @ 6500		
Max. Torque (Nm @ rpm)	229 @ 3900	315 @ 4300		
Valves	16	24		
Compression	10.0:1	10.7:1		
Bore & Stroke (mm)	88.0 x 97.0	91.0 x 83.0		
Engine Stop/Start	-	Standard		
Fuel ⁽¹⁾				
System	Sequential, Multiport, Electronic Fuel Injection			
Type	Unleaded Petrol			
Tank Capacity (L)	59.8			
Economy (Urban, L/100km) ⁽¹⁾	12.7	13.1	13.3	
Economy (Highway, L/100km) ⁽¹⁾	6.9	7.7	8.3	
Economy (Combined, L/100km) ⁽¹⁾	9.1	9.7	10.1	
Emissions ⁽¹⁾				
Emission Standard Met	6			
Emissions (Combined, CO ₂ g/km) ⁽¹⁾	211	226	235	
Weights				
Max. Braked Towing Capacity (kg)	2,000	2,200		
Max. Unbraked Towing Capacity (kg)	750			
Max. Tongue Download (kg) ⁽²⁾	200	220		
Gross Vehicle Mass (kg)	2,291	2,435	2,495	
Gross Combined Mass (kg) Incl. Braked Towing	4,091	4,415	4,475	

	Sport 2.4L 9AT FWD	Longitude 3.2L 9AT AWD	Limited 3.2L 9AT AWD	Trailhawk 3.2L 9AT 4x4
Transmission				
Type	9-Speed Automatic Transmission			
Ratio - 1st	4.70			
Ratio - 2nd	2.84			
Ratio - 3rd	1.91			
Ratio - 4th	1.38			
Ratio - 5th	1.00			
Ratio - 6th	0.81			
Ratio - 7th	0.70			
Ratio - 8th	0.58			
Ratio - 9th	0.48			
Reverse	3.81			
Performance				
Acceleration (0-100km/h)	10.5	8.1		8.4
Maximum Speed (km/h)	196	206		180
Brakes				
Front - Type	Ventilated Disk, Floating Single Piston Caliper with ABS	Ventilated Disk, Floating Twin Piston Caliper with ABS		
Front - Size (mm)	330 x 28			
Rear - Type	Solid Disk, Single Piston Floating Caliper with ABS			
Rear - Size (mm)	278 x 12	320 x 12		
Steering				
Type	Electric, Rack-and-Pinion Power Steering (EPS)			
Kerb to Kerb Turning Circle (m)	11.5	11.6		
Column Adjustment	Tilt & Telescopic			



MY17 CHEROKEE

TECHNICAL INFORMATION*

Weights & Capacities	Sport 2.4L 9AT FWD	Longitude 3.2L 9AT AWD	Limited 3.2L 9AT AWD	Trailhawk 3.2L 9AT 4x4
Dimensions				
Length (mm)	4,623	4,624		4,626
Width (mm)	1,859		1,904	
Height (mm)	1,631	1,634		1,686
Wheelbase (mm)	2,699	2,700		2,719
Front Track (mm)	1,586		1,606	
Rear Track (mm)	1,584		1,604	
Wheel & Tyre				
Wheel Type	Alloy			
Wheel Size (Inches)	17 x 7.0	18 x 7.0		17 x 7.5
Tyre Size	225 / 60	225 / 55		245 / 65
Spare Wheel	Full Size Spare - Steel Wheel	225 / 60 / R17 - Steel Spare Wheel		Full Size Spare - Steel Wheel
Suspension				
Type	Coil			
Front	McPherson Struts, One-Piece Aluminium Sub-Frame, Coil-Over Shock Absorbers, Aluminium Lower Control Arms and Stabilizer Bar			
Rear	Multi-Link Suspension, Isolated High-Strength Steel Rear Cradle, Coil-Over Shock Absorbers, Aluminium Lateral Links and Stabilizer Bar			
4x4 Specifics				
4x4 System	-	Jeep Active Drive I AWD		Jeep Active Drive Lock 4x4
Operating Mode	-	Part-Time, Seamlessly Engages AWD / 4x4 at any speed		
Power Transfer Unit	-	1 Speed		2 Speed
Rear Locking Differential	-		Standard	
Disconnecting Rear Axle	-	Standard		
Running Clearance (mm)	185		221	
Approach Angle	16.7	18.9		29.9
Breakover Angle	17.7	19.5		22.9
Departure Angle	24.6	25.0		32.2
Wading Depth (mm)	-	405 ⁽³⁾		480 ⁽³⁾
Warranty & Service				
Service Intervals	12,000 km / 12 months			
Warranty	5 year / 100,000 km ⁽⁴⁾			
Roadside Assist	Unlimited if serviced through Jeep ⁽⁴⁾ OR 5 year / 100,000 km (whichever comes first)			



jeep.com.au

*Overseas models may be shown in imagery, Australian model and actual colours may vary. All product illustrations and specifications are based upon current information. FCA Australia Pty Ltd ABN 23 125 956 505 trading as FCA Australia reserves the right to make changes from time to time, without notice or obligation, in prices, specifications, technical information, accessories, colours, materials and to change or discontinue models. All vehicles, models, features, colours and/or accessories shown may not be available in Australia from time to time or at all. "Optional" may mean available as an option but only at an additional cost. For the details of the vehicles, models, features, colours and/or accessories currently available in Australia, please contact an authorised Jeep Dealer. (^) Terms & conditions apply. Please visit www.jeep.com.au/there-and-back or contact an authorised Jeep Dealer for full terms & conditions.

(1) Fuel consumption figures are according to Australian Design Rule (ADR) 81/02. Driving style, road and traffic conditions, fitment of accessories, environmental influences and vehicle condition can lead to consumption figures which may differ from those calculated with these standards. (2) Trailer tongue download subject to certain operating conditions. Please refer to Owner's Manual for full details. (3) Avoid driving in standing water deeper than 405mm (16 inches) for Longitude & Limited variants, or 480mm (19 inches) for Trailhawk variants. Reduce speed appropriately to minimise wave effects. Maximum speed in water is less than 8 km/h (5 mp/h). (4) This ANCAP safety rating applies to variants with a 4 cylinder engine. Other variants are unrated.